

Customer :

customer

Customer part :

customer part

Comment :

Comment

S1=3.61

S2=4.11

Tmax=466

Tp S2=505.0

PI=0.47

HI=66

Sample =1755.30

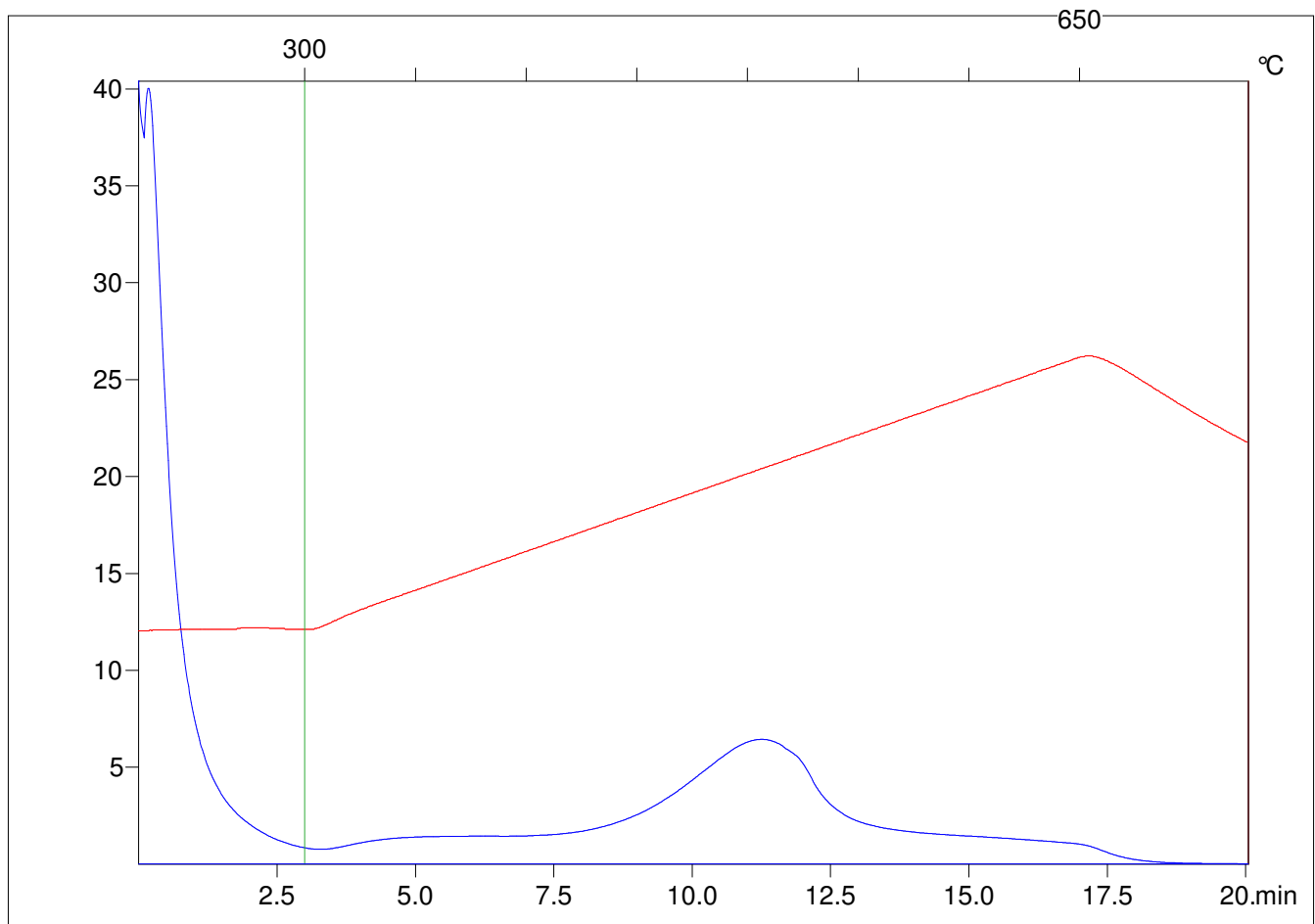
Method =Bulk Rock

Cycle=Basic

KFID(10*9)=1444

Qty =70.3

TOC=6.22



C:\VINC\PK3_1792\PK010.R00 : FID pyrolysis graphic

State

Pyro Status

Oxi Status